



Catastrophic failure of a hydraulic ram in a boom type MEWP

Steel erectors were working from a Nifty Lift HR12 Boom type MEWP at approximately 5 metres when the hydraulic ram which positions the lower boom sheared in a catastrophic manner resulting in the boom collapsing.

The person operating the MEWP sustained a fractured sternum, fractured rib, sprained ankle and minor grazes to his face.

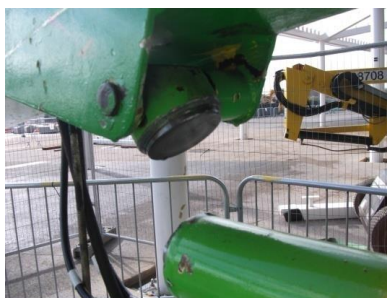


The initial investigation has identified that the weld connecting the head of the ram to the main body of the ram has failed. The cause of this is currently being further investigated, however, neither witness statements or CCTV footage of the incident indicate that the MEWP was struck immediately prior to the incident or during its time on site.

It is understood that the MEWP was 17 years old; however the ram was replaced two years ago and the last six monthly inspection had been completed in July 2014. An inspection of a similar MEWP on the site revealed a crack in the paint at a similar weld point.

Learning points

1. Thorough visual pre-use inspections of all equipment, as required, should be completed prior to use
2. If any signs of damage or defects are found a MEWP should be immediately quarantined, and further advice sought from your line manager or the MEWP supplier



Issue date	14/05/15	Ref. No	UAG0017
------------	----------	---------	---------